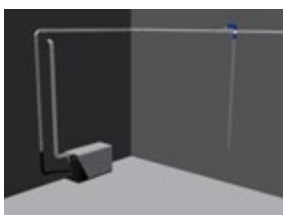


# Fix & Fit duct system

## Effex

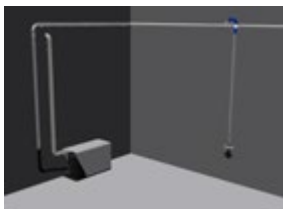
### High vacuum duct system



#### ST-300P

**Art. no. 752159**

A complete system designed for MB- 300A. This system is composed of 48 m steel pipes in dimensions from Ø 60 to Ø 80. Four 90° elbows and four complete connection points are also included as well as RK valves with microswitches, and necessary parts.



#### ST-500P

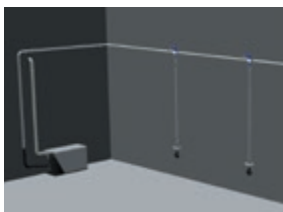
**Art. no. 752160**

This system is prepared for MB-500A. The system is more or less identical to ST-300P. The difference is the connection points. In this system the RK valves are replaced by valves, of type VV. In addition there are manual shut-off dampers with microswitches on each VV-valve.



#### APPLICATION

A complete duct system designed for high vacuum. The system consists of electrolytical zinc-treated steel pipe and details. The straight pipes has a wallthickness of 1.2- 1.5 mm. All other components have a wall thickness of 2 mm. This in order to ensure good durability against wear and tear. The system is very flexible and also easy to install.



#### ST-1000P

**Art. no. 752161**

This system is prepared for MB-1000A. A total of 96 m of pipes and necessary details are included. In total, there are six connection points with identical valves, the same damper as the ST- 500P. All necessary installation parts are included.

# Fix & Fit duct system

## Effex

### Separate components



#### PIPES

Pipe made of electrolytical zinc-treated steel. Delivered in following dimensions: Ø 50, Ø 63, Ø 76, Ø102, Ø108, Ø127, and Ø152. The pipes have a wall thickness of 1.2 - 1.5 mm, and are delivered in lengths of 3 and 6 m.



#### ELBOWS

Elbows in electrolytical galvanized steel. Delivered in the same dimensions as the pipes. The elbows have a wall thickness of 2 mm and are therefore suitable for abrasive particles and materials. Both 90° and 45° elbows are available.



#### BRANCHES

Branches in the same material as pipes and elbows. Delivered in most dimensions. Material thickness 1.5 - 2.0 mm.



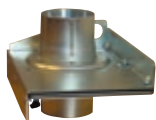
#### REDUCTIONS

For connecting different pipe dimensions. Makes it easy to reduce to smaller dimensions. Material thickness of 1.5 - 2.0 mm.



#### CONNECTORS

For connecting different pipes and other components. It is composed with a steel tube with a rubber sleeve inside. Delivered in all sizes. The rubber sleeve is made of conductive EPDM-rubber.



#### DAMPERS

Damper with rubber sealing device. Delivered in all sizes. Delivered as manual or automatic units. Intelligent design makes the dampers very easy to operate, even with high mechanical strain. The dampers can be equipped with microswitches.



#### HARD-WEARING HOSES

This hose can be used in bends and connections where extreme wear may occur. They are also used where a flexible assembly is needed, as they provide greater flexibility and options for assembling connection points.



#### ASSEMBLING DETAILS

Components for easy assembling and fixing of the duct system can be delivered as well. Parts such as hose clamps, screws, suspensions etc. are available. We refer to the price list for a complete overview.

We reserve the right to make changes.